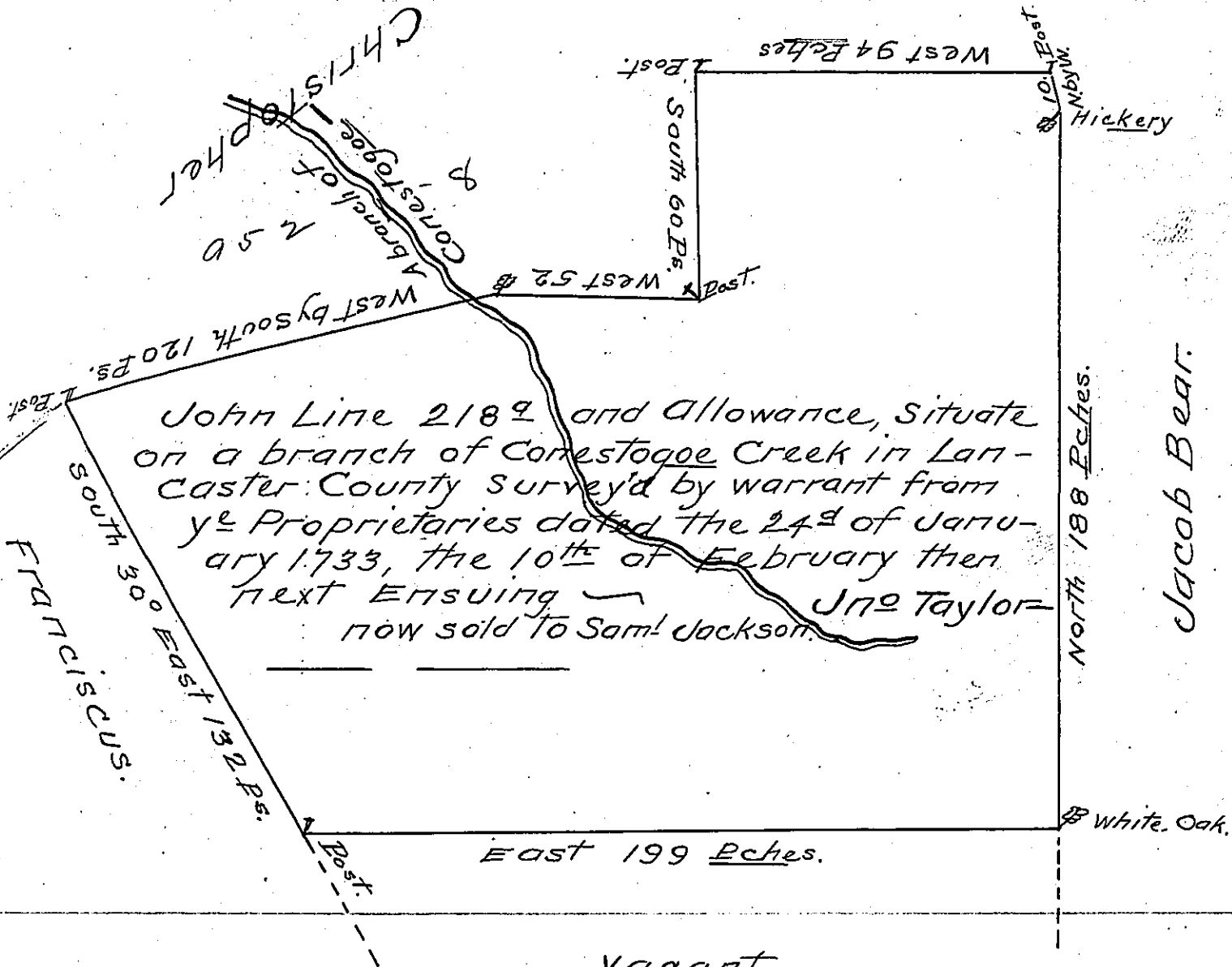


VACANT.



John Line 2189 and Allowance, situate on a branch of Conestogoe Creek in Lancaster County surveyed by warrant from ye Proprietaries dated the 24th of January 1733, the 10th of February then next ensuing - now sold to Saml Jackson. Jno Taylor

IN TESTIMONY that the above is a copy of the original remaining on file in the Department of Internal Affairs of Pennsylvania, made conformably to an Act of Assembly approved the 16th day of February, 1833, I have hereunto set my Hand and caused the Seal of said Department to be affixed at Harrisburg, this eleventh day of July 1905.

Geo. R. Brown
Secretary of Internal Affairs